

xiaomi Multi-function Camping Lantern User Manual

Original instructions



Read this manual carefully before use, and retain it for future reference.

Safety Precautions

Cautions

Reasonable use

- Please use the product correctly as described in this manual.

Charging notices

- Please use a qualified charger that meets the camping lantern's specifications.
- If the camping lantern has not been used for a long period of time and the indicator on the primary light does not work properly when charged again, continue charging for 30 minutes and then check whether the indicator works normally.
- If you use a charger that does not meet the camping lantern's specifications, any damage caused thereby to the camping lantern will not be covered by the warranty, and it may lead to other risks.
- If the camping lantern's battery reaches 45°C, the charging protection function will be triggered and charging will be stopped. It is recommended to charge the battery at room temperature.

Usage instructions

- The camping lantern can emit a strong light. Avoid shining the light directly into the eyes of people or animals or into the lenses of optical equipment.
- To reduce the risk of injury, children should be supervised by their parents when using the camping lantern.
- To reduce the risk of electric shock, do not place the camping lantern in water or any other liquids.
- Do not place or store the camping lantern at places where it is easy to fall into a bathtub or sink.
- The camping lantern's light bulbs are irreplaceable. When a light bulb reaches the end of its service life, the entire camping lantern needs to be replaced.
- People with epilepsy, autism or other users sensitive to light flicker should not use breathing and candle flicker modes for a long time.

Maintenance services

- This product cannot be disassembled and should only be repaired by technicians authorized by Xiaomi. To avoid injury, do not attempt to repair it by yourself.

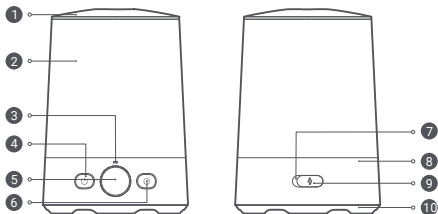
Battery safety warnings

- Do not open or cut the battery.
- Do not expose the battery to heat or flames. Keep the battery away from direct sunlight.
- Do not subject the battery to mechanical shock.
- In case of accidental battery leakage, do not get the leaked liquid on your skin or eyes. In case of contact, rinse with plenty of water and seek medical attention promptly.
- Charge the battery before first use.
- After long-term storage, the battery needs to be charged and discharged several times for optimal performance.
- The battery is at its best performance when used at room temperature ($20^{\circ}\text{C} \pm 5^{\circ}\text{C}$).
- If the camping lantern needs to be disposed of, the battery must be removed.
- Disconnect the camping lantern from the power supply and then remove the battery.
- Please recycle and dispose of the battery in a proper and environmentally friendly manner.

Product Overview

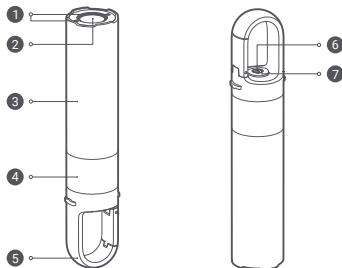
The camping lantern is divided into two parts – the primary light and the secondary light. It has the ability to switch between different light effect modes to provide different experiences.

Primary light



- | | | |
|-------------------|------------------------|-------------------|
| 1 Upper Cover | 5 Control Knob | 9 Waterproof Seal |
| 2 Camping Lantern | 6 Mode Button | 10 Bottom Cover |
| 3 Indicator | 7 Type-C Charging Port | |
| 4 On/Off Button | 8 Base | |

Secondary light

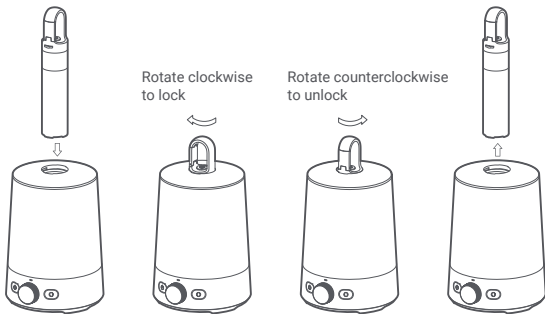


- | | | |
|----------------------------|---------------------------|-----------------|
| 1 Charging Contacts | 4 Side Light | 7 On/Off Button |
| 2 Lens | 5 Suspension Loop | |
| 3 Secondary Light Cylinder | 6 Battery Level Indicator | |

Note: Illustrations of product, accessories, and user interface in the user manual are for reference purposes only. Actual product and functions may vary due to product enhancements.

How to Use

Installing and unlocking the secondary light



How to use the primary light

Turning on/off

- Press and hold the on/off button for 0.5 seconds to turn the primary light on. By default, the primary light will be in the mode and state it was in when it was last turned off.
- Press and hold the on/off button again for 0.5 seconds to turn the primary light off.

Switching modes

While the primary light is on, press the mode button to cycle through the five modes: always-on, breathing, candle flicker, flowing color and color light.

Adjusting brightness

- While in the always-on mode, turn the control knob clockwise to increase brightness and counterclockwise to decrease brightness.
- While in the color light mode, turn the control knob clockwise to increase brightness and counterclockwise to decrease brightness.
- Brightness cannot be adjusted while in candle flicker, breathing, or flowing color modes.

Adjusting color temperature/color

- Always-on mode: While pressing and holding the control knob, turn clockwise to increase color temperature, and turn counterclockwise to decrease color temperature.
- Color light mode: Turn the control knob while pressing and holding it to adjust the color.
- Color temperature/color cannot be adjusted in candle flicker, breathing, or flowing color modes.

Indicator

- In operation:
Battery level $\leq 10\%$: blinks red
 $10\% < \text{Battery level} \leq 30\%$: keeps red
Battery level $> 30\%$: off
- While charging:
While charging, the indicator will breathe in white. Once the battery is fully charged, the indicator will breathe in white for 20 seconds and then go out.
- Bluetooth connection status:
Waiting for connection: blinking blue
Bluetooth connected: keeping blue
OTA updating: blinking blue
Reset successfully: blinking blue

How to use the secondary light

Turning on/off

- Press and hold the on/off button for 0.5 seconds. By default, the secondary light will be in the flashlight mode. Press and hold the button again for 0.5 seconds to turn off the light.
- Once the secondary light is inserted into the primary light and locked into place, it will automatically turn off.

Switching modes

While the secondary light is on, press the on/off button to cycle through the flashlight and side light modes.

Note: Brightness or color temperature cannot be adjusted when in flashlight or side light modes.

Battery level indicator

- In operation:
Battery level $\leq 10\%$: blinks red
 $10\% < \text{Battery level} \leq 30\%$: keeps red
Battery level $> 30\%$: off
- While charging:
While charging, the battery level indicator will breathe in white. Once the battery is fully charged, the battery level indicator will breathe in white for 20 seconds and then go out.

How to charge

Secondary light attached to primary light

- When a Type-C charging cable is plugged in, the primary light and secondary light will be charged at the same time.
- When a Type-C charging cable is not plugged in, the primary light will charge the secondary light until it is fully charged.

- If the battery of the primary light goes below about 15%, it will trigger battery protection and stop charging the secondary light. Once the primary light is recharged to over about 30%, re-insert the secondary light to begin charging it.

Secondary light detached from primary light

- The primary light can be charged by using a Type-C charging cable.
- The secondary light cannot be charged independently.

Connecting with the Mi Home/Xiaomi Home App

This product works with the Mi Home/Xiaomi Home app*. Control your device with Mi Home/Xiaomi Home app.

Scan the QR code to download and install the app. You will be directed to the connection setup page if the app is installed already. Or search for "Mi Home/Xiaomi Home" in the app store to download and install it.

Open the Mi Home/Xiaomi Home app, tap "+" on the upper right, and then follow the instructions to add your device.

* The app is referred to as Xiaomi Home app in Europe (except for Russia). The name of the app displayed on your device should be taken as the default.



FC6C96A1

The following tasks can be carried out in the Mi Home/Xiaomi Home app:

- Turn on/off the camping lantern; adjust brightness, color temperature, and color for always-on mode and color light mode in the Lighting mode.
- Switch modes and add your own modes.
- Use turn-off delay.

Note

The version of the app might have been updated, please follow the instructions based on the current app version.

Resetting Bluetooth

Press and hold the on/off button of the primary light for seven seconds to reset the camping lantern's Bluetooth connection. The camping lantern will automatically restart.

Note: After the Bluetooth connection is reset, tap the "+" in the upper right corner of the homepage in the app and re-add the camping lantern.

Troubleshooting

Issues	Possible Causes	Solutions
When pressing the on/off button, the camping lantern doesn't respond or the indicator on the primary light blinks red.	The lithium-ion battery level is low.	Please promptly charge the battery.
The indicator on the primary light does not light up when charging.	1. The charging cable isn't plugged in or a suitable charging cable isn't being used; 2. The ambient charging temperature is below 0°C or above 45°C.	1. Use a suitable charging cable and a 5 V power adapter; 2. Charge the battery at room temperature.
The secondary light does not turn on.	1. The lithium-ion battery level is low. 2. There might be strong magnetic interference around the secondary light.	1. Promptly charge the camping lantern; 2. Keep the secondary light away from strong magnetic fields.
The secondary light cannot be charged.	1. The charging contacts on the secondary light are soiled; 2. The ambient charging temperature is below 0°C or above 45°C.	1. Remove the stains from the charging contacts; 2. Charge the battery at room temperature.
The secondary light is on and doesn't turn off when inserted into the primary light.	The secondary light has not been rotated far enough.	Rotate the secondary light to the locked position.
The secondary light is on but cannot be charged when inserted into the primary light.	The secondary light has not been rotated far enough.	Rotate the secondary light to the locked position.

Specifications

Model: MJLYD001QW

Item Dimensions: 198 × 114 × 123
mm

Net Weight: Approx. 565 g

Battery Type: Lithium-ion battery

Primary Light Specifications:

Input: 5 V $\overline{=}$ 2 A

Brightness Adjustment: 6 lm–230 lm

Color Temperature Adjustment: 2700–5000 K

Color Adjustment: RGB

Battery Capacity: 4800 mAh (3.69 V)

Charging Time: Approx. 210 min

Wireless Connectivity: Bluetooth Low Energy 5.0

Secondary Light Specifications:

Input: 5.8 V $\overline{=}$ 0.38 A

Flashlight Luminous Flux: 120 lm

Flashlight Color Temperature: 5000 K

Side Light Luminous Flux: 70 lm

Side Light Color Temperature: 2700 K

Battery Capacity: 800 mAh (3.7 V)

Charging Time: Approx. 150 min

When fully charged, the camping lantern can be used for:

Primary light			Secondary light	
Always-on mode		Color light mode	Flashlight	Side light
High light	Low light			
Approx. 4.3	100	Approx. 24 hours (Max.)	2.7	4 hours



Regulatory Compliance Information

Europe – EU declaration of conformity



We, Shanghai HOTO Technology Co., Ltd., hereby, declare that this equipment is in compliance with the applicable Directives and European Norms, and amendments. The full text of the EU declaration of conformity is available at the following internet address: <http://www.mi.com/global/service/support/declaration.html>

UK declaration of conformity



We Shanghai HOTO Technology Co., Ltd., hereby, declares that this equipment is in compliance with the applicable Legislation. The full text of the UK declaration of conformity is available at the following internet address: <https://www.mi.com/uk/service/support/declaration.html>

Disposal and recycling information



All products bearing this symbol are waste electrical and electronic equipment (WEEE as in directive 2012/19/EU) which should not be mixed with unsorted household waste.

Instead, you should protect human health and the environment by handing over your waste equipment to a designated collection point for the recycling of waste electrical and electronic equipment, appointed by the government or local authorities. Correct disposal and recycling will help prevent potential negative consequences to the environment and human health. Please contact the installer or local authorities for more information about the location as well as terms and conditions of such collection points.

Manufactured for: Xiaomi Communications Co., Ltd.

Manufactured by: Shanghai HOTO Technology Co., Ltd.
(a Mi Ecosystem company)

Address: Building 45, No. 50 Moganshan Road, Shanghai, China

For further information, please go to www.mi.com

User Manual Version: V1.0

Importer:
Beryko s.r.o.
Pod Vinicemi 931/2, 301 00 Plzeň
www.beryko.cz